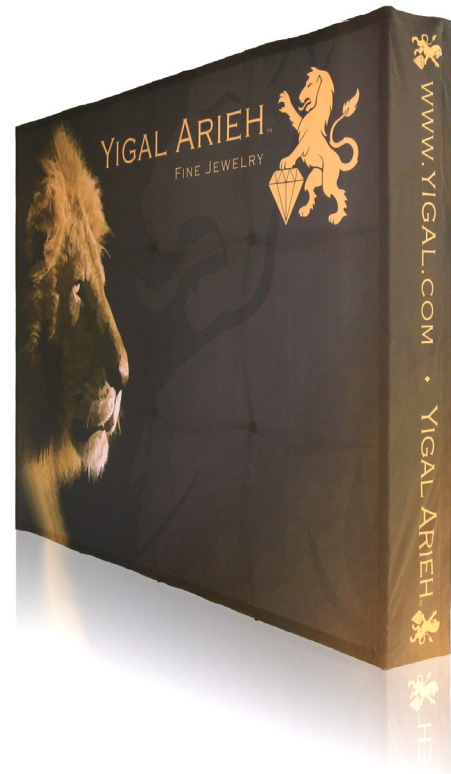


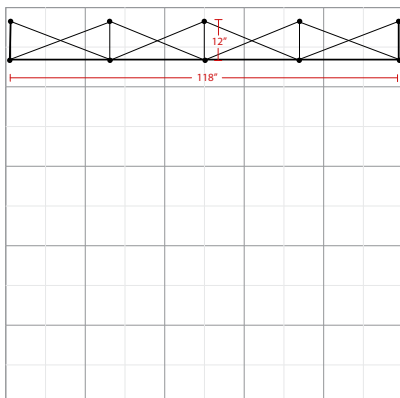
READY POP FABRIC POP UP DISPLAY 10FT STRAIGHT



*Optional 200 watt halogen lights



*Package includes padded nylon travel bag



The box represents 10' x 10' booth.

Product Features

Our ultra lightweight aluminum alloy fabric pop-up display in a matte satin anodized finish is an ideal eye-catcher for your trade show, exhibition, or conference. Its versatility and simple 2-minute setup, as well as its Velcro attachment, makes it functional for special events as well as an in-office promotional tool for walk-in customers. Another convenient feature is that your graphic stays attached in your free travel/carry bag that comes with each frame you purchase.

Graphic Size	141.5"W x 88.98"H
--------------	-------------------

Display Size	118"W x 89"H x 12"D
--------------	---------------------

Finishing

2" loop Velcro perimeter

Printing Material	Fabric
-------------------	--------

Construction

Aluminum Frame

2" Hook Velcro Strips

Plastic Hooks

Weights - Dimensions

Shipping Weight	42lbs
-----------------	-------

Shipping Dimensions	36" x 18" x 16"
---------------------	-----------------

Parts List

(1) Aluminum Frame	(1) Padded Nylon Bag with drawstring
--------------------	--------------------------------------

(1) Digital Print on Fabric w/ End Panels	(1) Wheel Frame for Carry Bag
---	-------------------------------

Graphic Specification

Graphic Size: 141.50W " x 88.98H" (includes 11.81" end panels on both sides)